



DESCENT & RESCUE DEVICE

A DESCENT & RESCUE DEVICE - UZO 9

KEY FEATURES

The descent and rescue device, UZO 9, conforms to the standard EN 341:2011.

The device is operated manually and conforms to the requirements for the B class equipment.

UZO 9 is fitted with a fixed 11 mm static rope [1].

The device's core is a fixed metal plate placed between two halves of its housing. The device tapers towards the bottom, where the attachment point for an EN362 conforming connector is located [2].

Inside the device a system of rollers guides the rope and a rotating cam that changes position to lock and unlock the rope by pressing it against a fixed, unmoving contact part. The textile rope enters the device from above, runs downwards, circling the cam from the left-hand side, and then upwards between the cam and the contact. It exits the device housing towards the handle for descent control.

Other mechanical parts are situated on the other side of the metal plate, under the back of the housing – like a gear that coordinates the movement of the handle [3] with the rotating movement of the cam.

To replace the rope, it is necessary to unscrew and open the front part of the housing [4].




PATENTED
OPATENTOWANE



- 1 static rope, diam. 11 mm
- 2 connector EN362
- 3 handle for descent control
- 4 front of housing

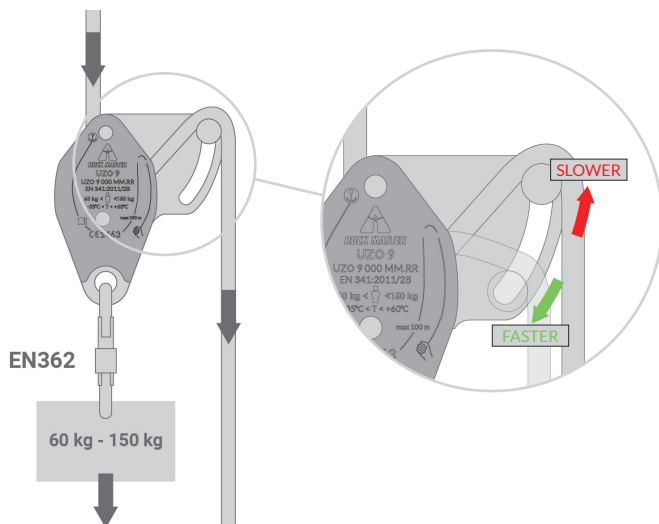
TECHNICAL FEATURES

STANDARD:	EN 341:2011/2B	ACCEPTABLE TEMP.:	-35°C ÷ +60°C	RISK CATEGORY:	III
SAFE LOAD:	60 - 150 kg	ACCEPTABLE NO. OF USERS:	1 person	MAX DESCENT HEIGHT:	100 m

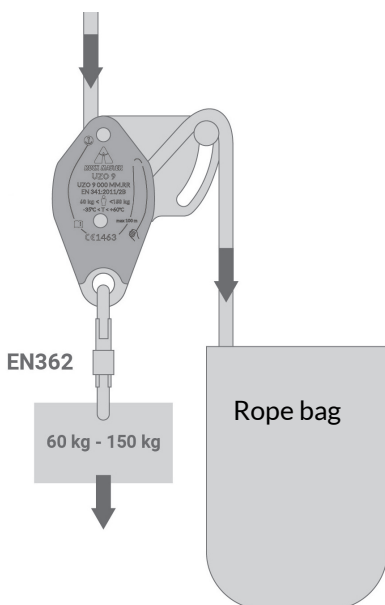
OPERATING MODES

Descent.

Because of its technical properties and how they are potentially affected by the weight of rope below, the UZO device is only designed for short descents, where the weight of the rope below will not adversely affect the function of the device. The maximum free length of rope below the device is 15 m.

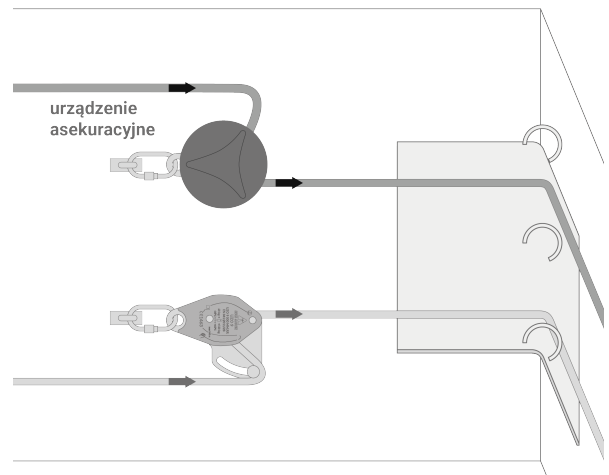


Descents of over 15 m are possible only if the rope entering the device is bagged and moves with the operator.



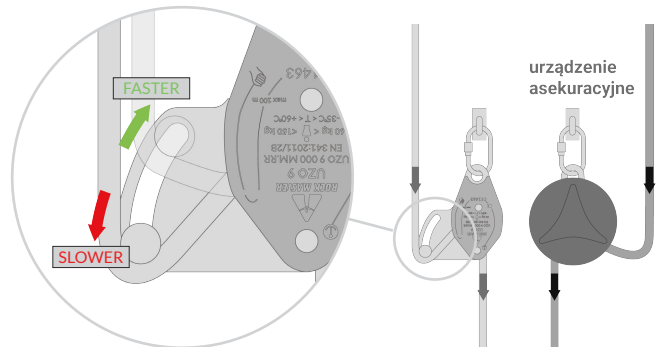
Lowering over the edge.

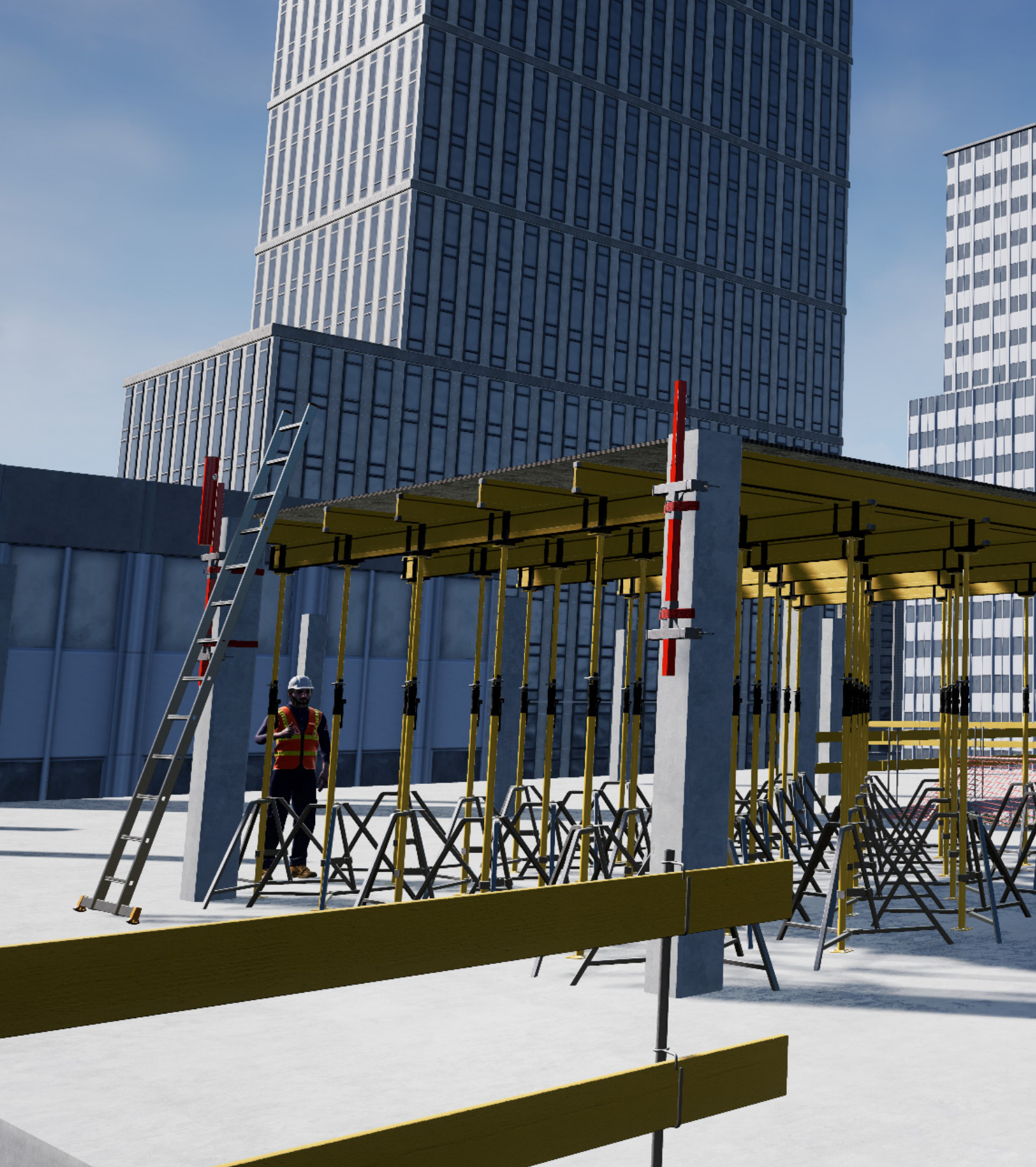
Use additional protective measures: a second rope and a fall arresting device.



Lowering from structures.

When using the UZO 9 for lowering, ie. upside down, the length of rope exiting the device does not affect the function. For this reason, lowering over the edge has no height limit, as long as the maximum single descent height of 100 m is not exceeded.





ROCK MASTER

CBR Rock Master Sp. z o. o. Sp. k.
ul. Królewska 94/11, 30-079 Kraków,
tel. +48 12 290 30 35;
e-mail: office@rockmaster.eu
NIP: 945-18-44-489

Centrum Badań i Rozwoju
ul. Sportowa 20, 32-083 Balice,
e-mail: cbr@rockmaster.eu

www.rockmaster.eu