



PATENTED
OPATENTOWANE

VERTICAL-HORIZONTAL

metal wire vertical-horizontal safety system
one self-locking fall arrest device



ROCK MASTER

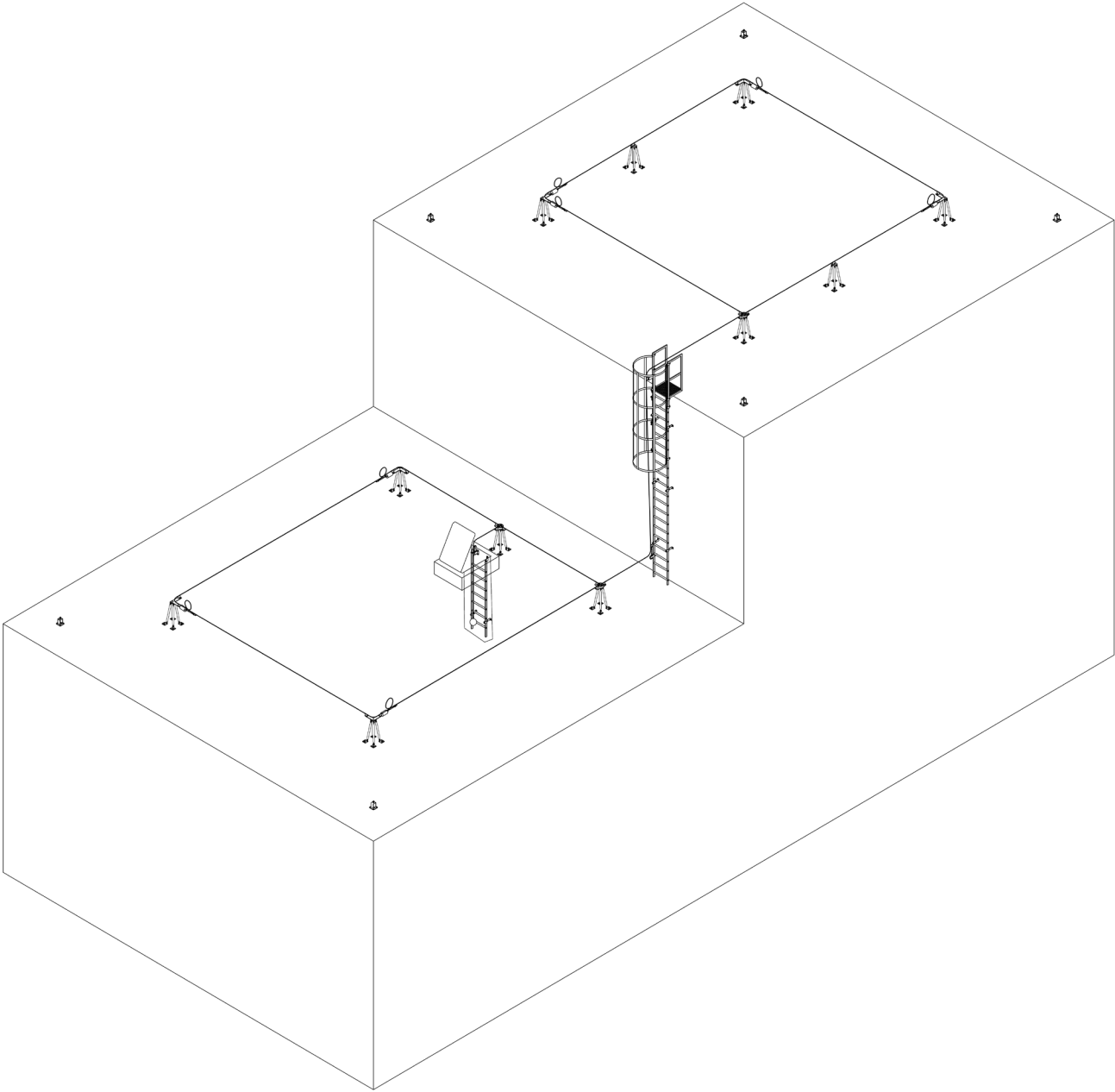
VERTICAL-HORIZONTAL

metal wire vertical-horizontal safety system one guided self-locking device

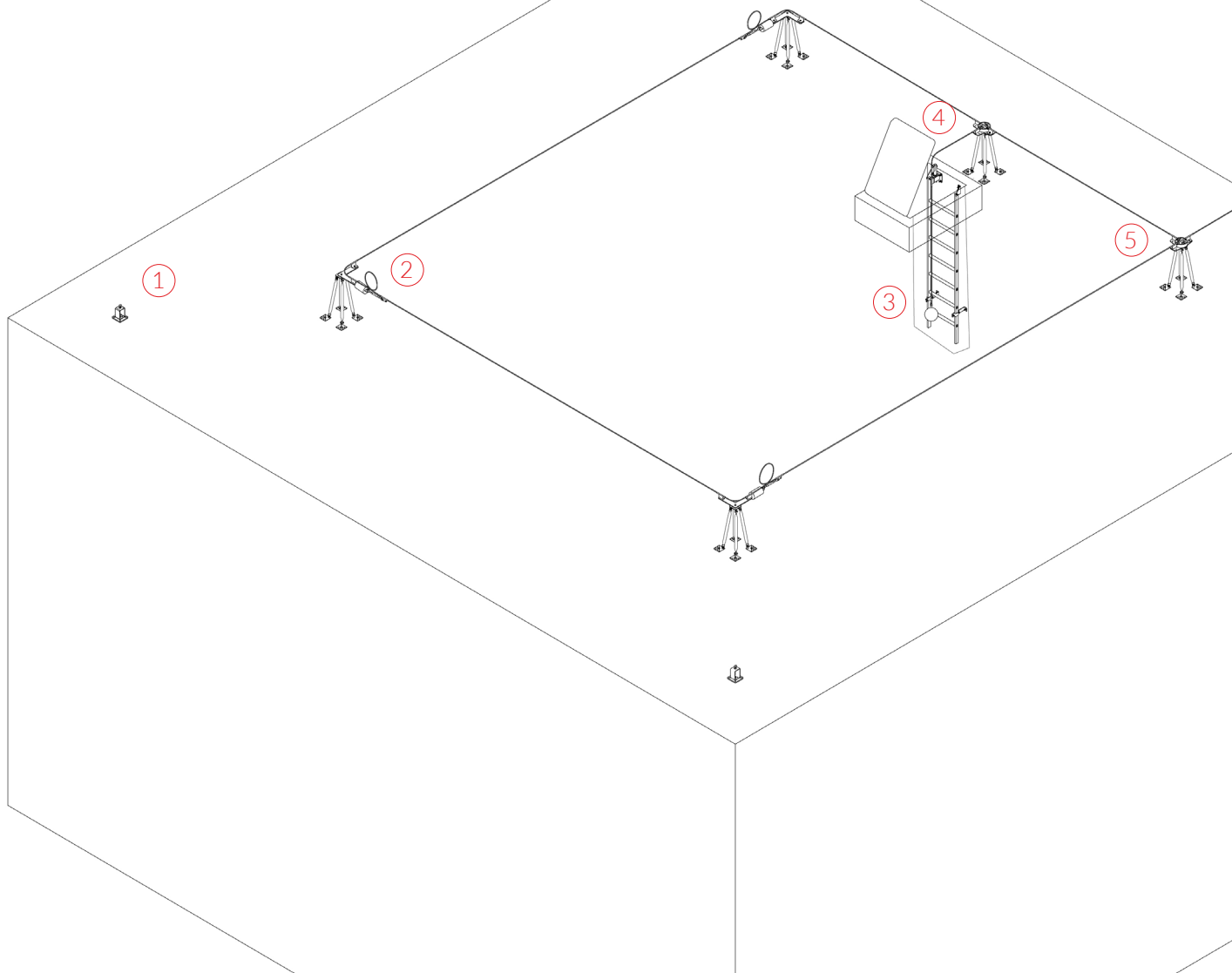
Since 1990 Rock Master Company has been operating in the field of securing work at height by production and supply of personal and collective protection equipment, assembling of ladders and life line systems, trainings. Our Research and Development Center is working on the development and implementation of new solutions for individual fall protection. Among other things, we have patented an innovative fall protection system Track Master.

The most important feature of our system is the anchoring device with the self-locking function which is used to travel along the entire system, ensuring the continuity of assurance during the transition from the vertical (ladder) to the horizontal (roof), likewise when passing through a roof hatch (vertical) to the roof (horizontal). This very system is protected by a patent and it gives the unprecedented level of safety and convenience when working at height.

TRACK MASTER SYSTEM SCHEME



HORIZONTAL SYSTEM AND PASSAGE THROUGH THE ROOF HATCH

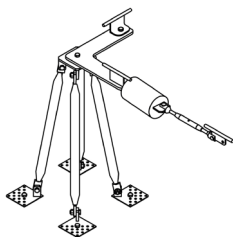


①



UPLR
SP15, BS

②



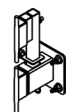
UPLN
SL, SQ16, AS, NK

③



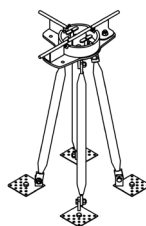
M5

④

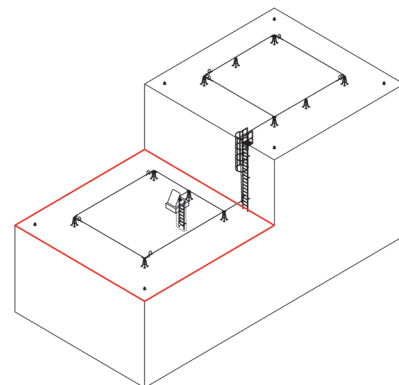


SGW
WGW

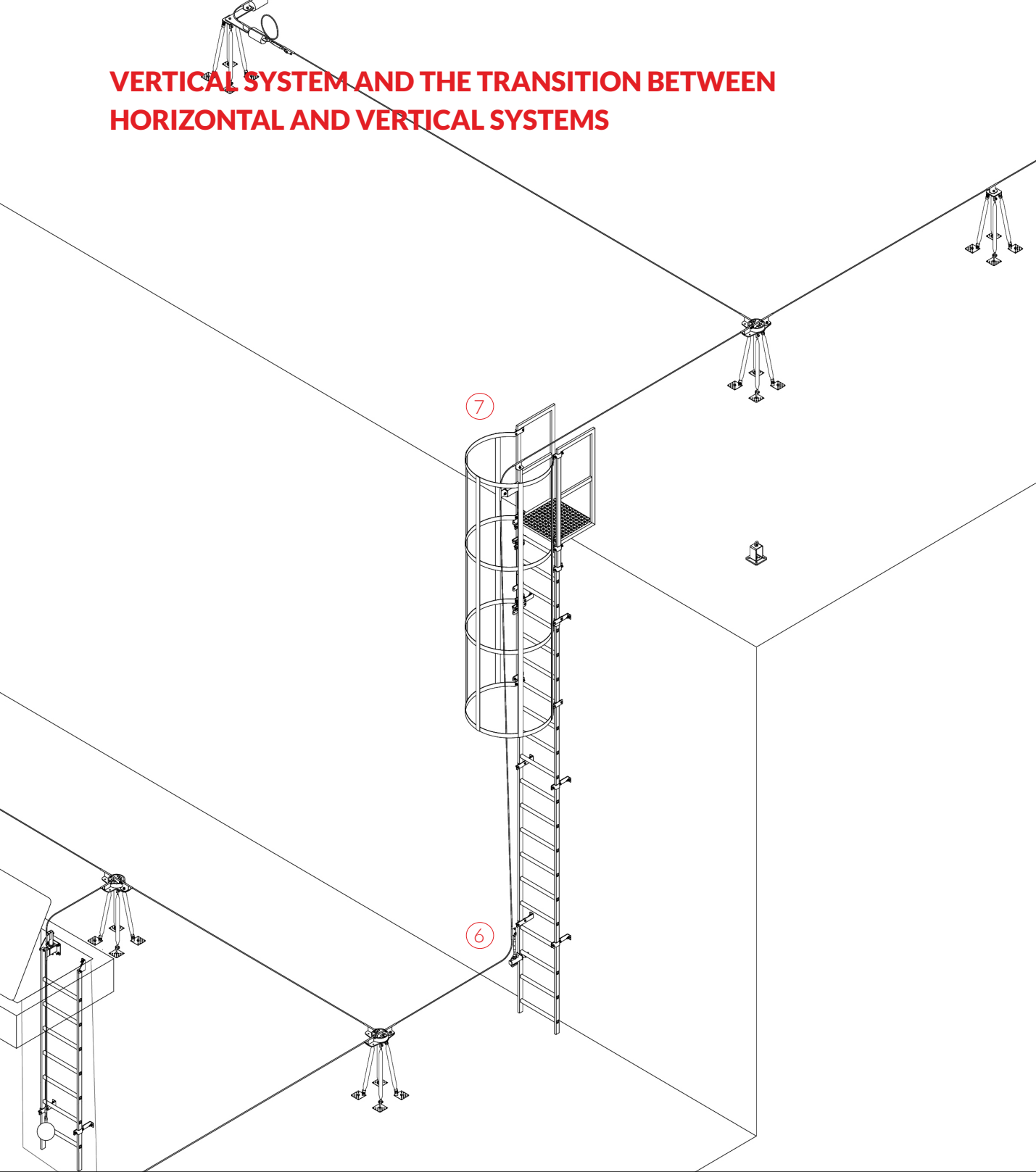
⑤



UPLS, OBR3,
SQ16



VERTICAL SYSTEM AND THE TRANSITION BETWEEN HORIZONTAL AND VERTICAL SYSTEMS

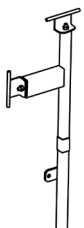


6

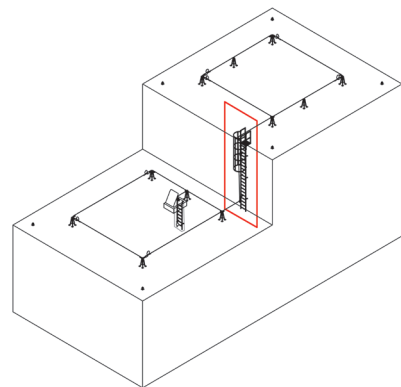


UPLN, NK
DPKP

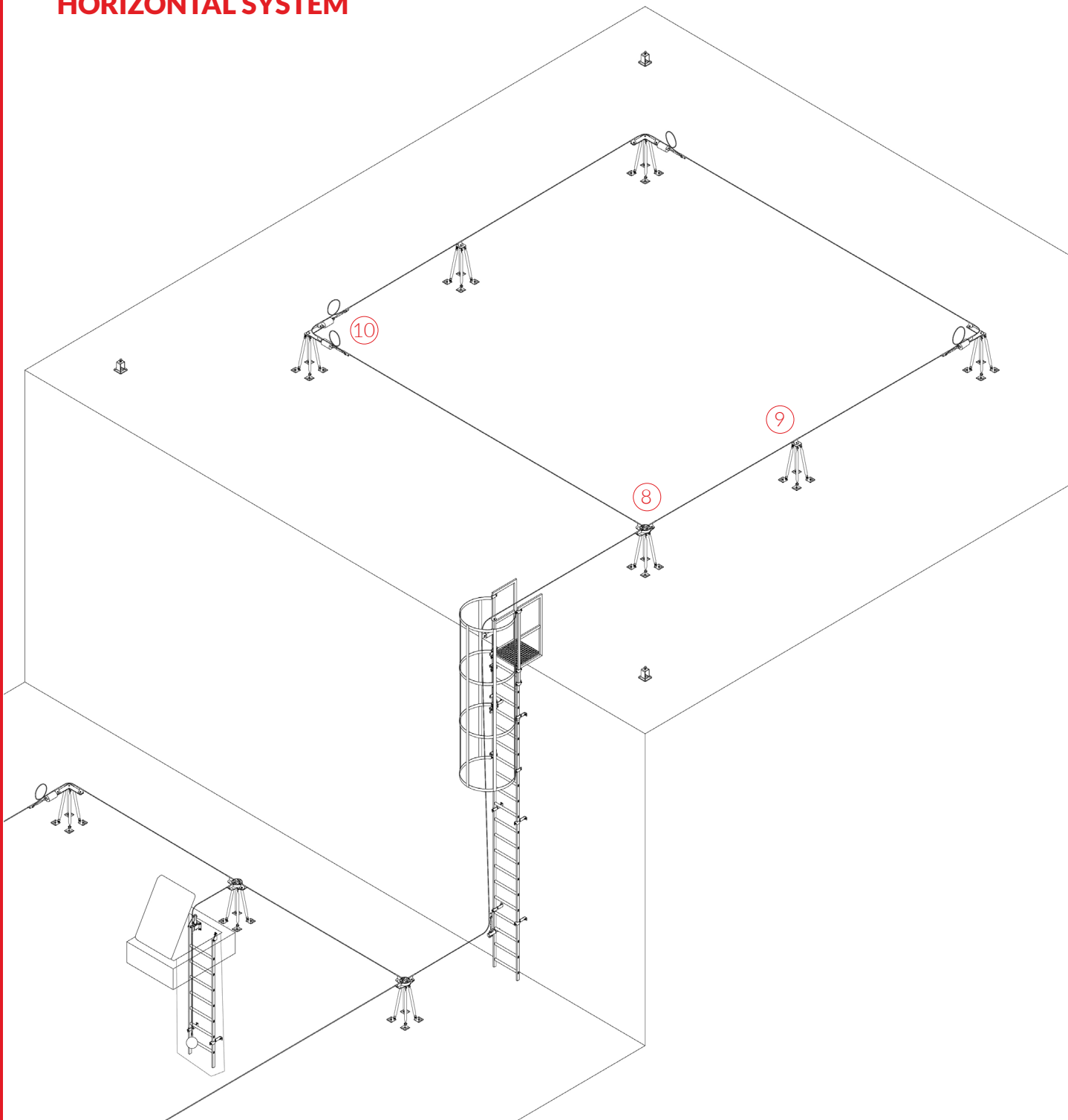
7



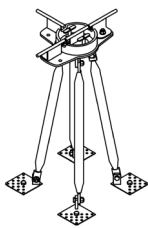
UPLS
GPKPK



HORIZONTAL SYSTEM

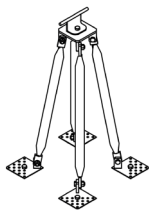


8



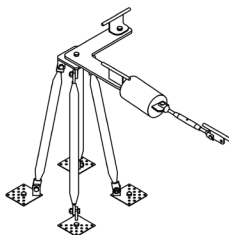
UPLS, OBR3,
SQ16

9

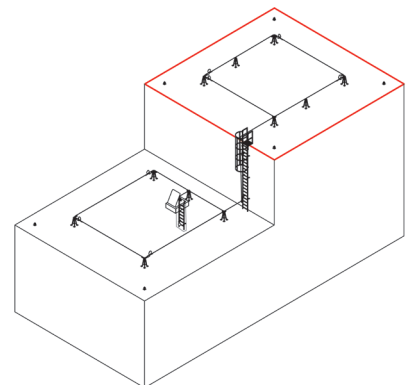


UPLS, SQK8

10



UPLN, SL, SQ16,
AS, NK



PERSONAL PROTECTION EQUIPMENT TO MOVE IN THE SYSTEM

TROLLEYS	11
CONNECTING ELEMENTS	12

HORIZONTAL SYSTEM

ROPE GUIDING HANDLES	14
WING 900	15
TURNTABLES	15
BOSH POST	16
RECTANGULAR POST	17
WALL POST	17
QUADROPOD POST	18
POST BASES	19
DAMPERS	21

VERTICAL SYSTEM

GUIDING AND ANCHORING HANDLES	23
LOWER ANCHOR POINTS	24
UPPER ANCHOR POINTS	25
MOUNTING ELEMENTS OF ANCHOR POINTS	26

ELEMENTS CONNECTING THE VERTICAL AND HORIZONTAL SYSTEM

EDGE TRANSITION SYSTEMS	28
ROOF HATCH PASSAGE SYSTEMS	29
SWITCHES AND LIMITERS	30

UNIVERSAL ELEMENTS

ENDING ELEMENTS AND TENSIONERS	32
STEEL ROPES	34
UNIVERSAL ANCHOR POINTS	34
MOUNTING KITS	35

PERSONAL PROTECTION EQUIPMENT TO MOVE IN THE SYSTEM

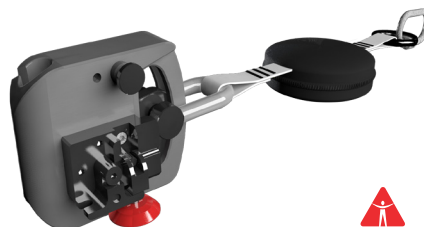


TROLLEYS

TRACKER AN OPENABLE SELF-LOCKING FALL ARREST DEVICE WITH ANCHORING FUNCTION FOR A FLEXIBLE ANCHOR LINE

CE 1463
PN-EN 353-2:2005
EN 353-2:2002

material:	stainless steel, aluminium
assembly:	attaching to the rope after sliding the locking pin
weight:	1,2 kg
dimensions:	105 mm x 90 mm




PATENTED

Equipped with:

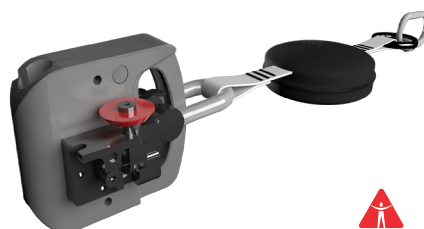
- shock absorber and snap fastener,
- self-locking tongue locking system,
- element fastening the lock.

Additionally tested for compliance with 795: 2012 C. The trolley is designed for vertical and horizontal movement on 8 and 10 mm ropes.

TRACKER BLOCK AN UNOPENABLE SELF-LOCKING FALL ARREST DEVICE WITH ANCHORING FUNCTION FOR A RIGID ANCHOR LINE

CE 1463
PN-EN 353-1+A1:2018-03
EN 353-1:2014+A1:2017

material:	stainless steel, aluminium
assembly:	attaching to the rope using an entry/exit point
weight:	1,2 kg
dimensions:	105 mm x 90 mm




PATENTED

Equipped with:

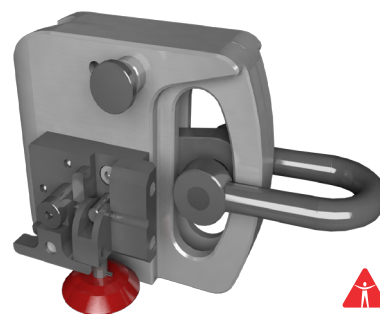
- shock absorber and snap fastener,
- self-locking tongue locking system,

Additionally tested for compliance with 795: 2012 C. The trolley is designed for vertical and horizontal movement on 8 mm rope.

TRACKER B AN ANCHOR DEVICE WITH A SELF-LOCKING FUNCTION

CE 1463
PN-EN 795:2012 B
EN 795:2012

material:	stainless steel, aluminium
assembly:	attaching to the rope after sliding the locking pin
weight:	1,2 kg
dimensions:	105 mm x 90 mm




PATENTED

The trolley is designed for horizontal movement on 8 mm rope.

CONNECTING ELEMENTS

KS STEEL CARABINE

PN-EN 362:2006

material:	steel
assembly:	screwing with the Keylock lock
weight:	176 g



*The carabiner can only act as a guiding element in the horizontal system.
It is possible to use other carabiners that comply with EN 362 standard.*

KA ALUMINIUM CARABINE

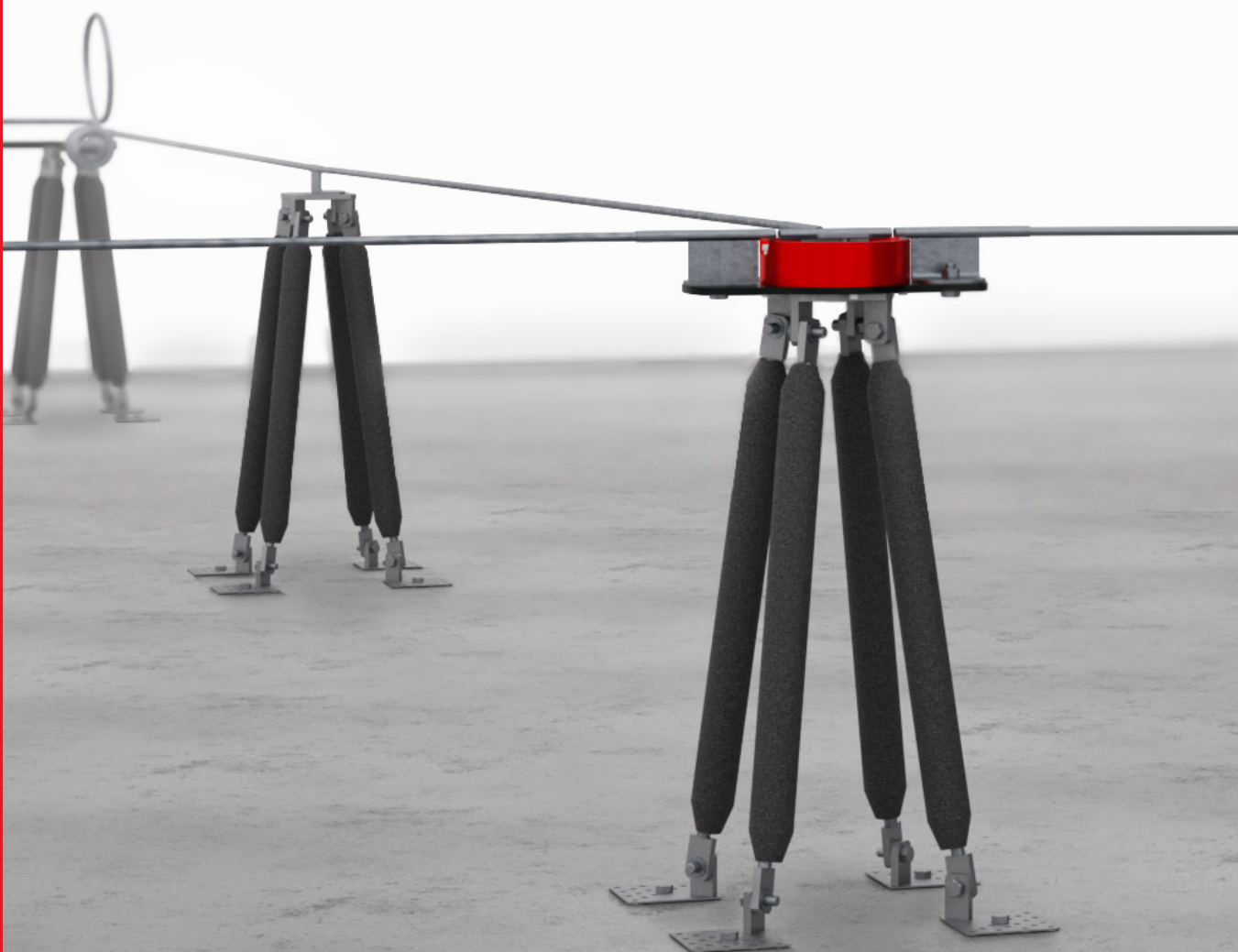
PN-EN 362:2006

material:	aluminium
assembly:	screwing with the Keylock lock
weight:	80 g



*The carabiner can only act as a guiding element in the horizontal system.
It is possible to use other carabiners that comply with EN 362 standard.*

HORIZONTAL SYSTEM



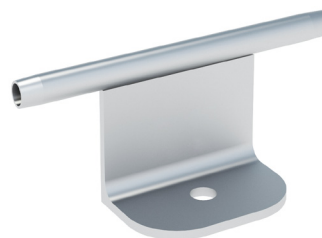
ROPE GUIDING HANDLE

UPLS

ROPE GUIDING HANDLE

PN-EN 795:2012 A

- material: stainless steel
- assembly: element adapted to make 2 or 3 clamps on each side of the tube, mounting to the post using M12 screw
- cooperating elements: LSN, SL, AN_UPL, SP15, SP20, SB, SQ



UPLM

ROPE GUIDING HOLDER - SMALL

PN-EN 795:2012 A

- material: stainless steel
- assembly: assembly to anchors and adapters with M12 screw
- cooperating elements: LSN, SL, AN_UPL, SP15, SP20, SB, SQ



UPLR

ROPE GUIDING HOLDER - RING

PN-EN 795:2012 A

- material: carbon steel
- assembly: assembly to anchors and adapters
- cooperating elements: SB, SP15, SP20, SQ, AN_UPL, SQK10, LSN



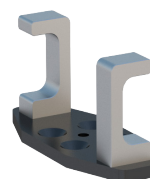
It can also be used as an ending element.

UPLW

ROPE GUIDING HOLDER - FORK

PN-EN 795:2012 A

- material: anodized aluminium
- assembly: assembly to anchors and adapters with M12 screw
- cooperating elements: SB, SP15, SP20, SQ



90 DEG WING

SL 90 DEG WING FOR ANY POST

PN-EN 795:2012 A

material:	stainless steel, anodized aluminium
assembly:	assembly to a post with an M12 screws
cooperating elements:	LSN, SP15, SP20, SB, SQ

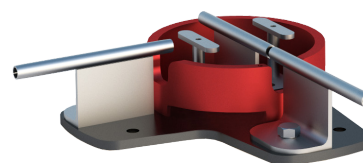


TURNABLES

OBR2-90 TWO-WAY 90 DEG ANGLE TURNTABLE

PN-EN 795:2012 A

material:	stainless steel, anodized aluminium
assembly:	assembly to a post with an M12 screws
cooperating elements:	LSN, NS, AS, SB, SQ, AN_OBR



OBR2-180 TWO-WAY STRAIGHT TURNTABLE

PN-EN 795:2012 A

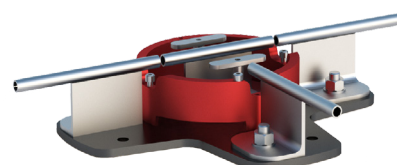
material:	stainless steel, anodized aluminium
assembly:	assembly to a post with an M12 screws
cooperating elements:	LSN, NS, AS, SB, SQ, AN_OBR



OBR3 TREE-WAY STRAIGHT TURNTABLE

PN-EN 795:2012 A

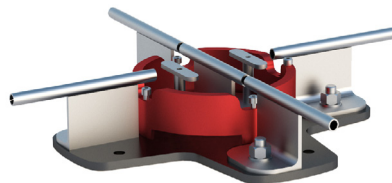
material:	stainless steel, anodized aluminium
assembly:	assembly to a post with an M12 screws
cooperating elements:	LSN, NS, AS, SB, SQ, AN_OBR



OBR4**FOUR-WAY TURNTABLE**

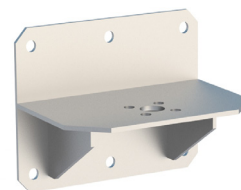
PN-EN 795:2012 A

- material: stainless steel, anodized aluminium
- assembly: assembly to a post with an M12 screws
- cooperating elements: LSN, NS, AS, SB, SQ, AN_OBR

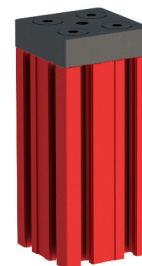
**AN_OBR****WALL ADAPTER - TURNTABLE MOUNTING**

PN-EN 795:2012 A

- material: steel
- assembly: for concrete, wall and steel with the M12 screws lub M12 chemical anchors
- cooperating elements: OBR, SB

**BOSCH POST****SB****BOSCH POST**PN-EN 795:2012 A
PN-EN 795:2012 C

- material: anodized aluminium
- assembly: assembly to the base with the M12 screws
- cooperating elements: BT, BTB, BW, UPLS, BST



Possible color version on customers request.

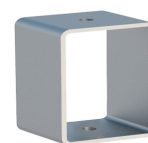
RECTANGULAR POST

SP10

RECTANGULAR POST 100X100

PN-EN 795:2012 A
PN-EN 795:2012 C

material:	steel
assembly:	assembly to the base using M12 screws
cooperating elements:	UPLS, BS, BST, UPLR, UPLW, UPLG



SP15

RECTANGULAR POST 100X150

PN-EN 795:2012 A
PN-EN 795:2012 C

material:	stal
assembly:	assembly to the base using M12 screws
cooperating elements:	UPLS, BS, BST, UPLR, UPLW, UPLG

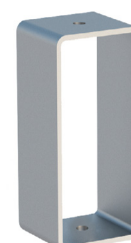


SP20

RECTANGULAR POST 100X200

PN-EN 795:2012 A
PN-EN 795:2012 C

material:	stal
assembly:	assembly to the base using M12 screws
cooperating elements:	UPLS, BS, BST, UPLR, UPLG, UPLW



ON WALL ADAPTER

AN_UPL

ON WALL ADAPTER

PN-EN 795:2012 A
PN-EN 795:2012 C

material:	steel
assembly:	for concrete and steel with the M12 screws or M12 chemical anchors
cooperating elements:	UPL



QUADROPOD ANCHORS

SQ16

QUADROPOD

PN-EN 795:2012 A
PN-EN 795:2012 C

material:	steel/stainless steel
assembly:	concrete installation, with use of M12 chemical anchors
height:	700 mm - 550 mm
cooperating elements:	SL, PW, BW_S, UPL, UPLS, UPLR., UPLG, OBR, SL, AS




PATENTED

SQ10

QUADROPOD WITH $\varnothing 10$ KNEES

PN-EN 795:2012 A
PN-EN 795:2012 C

material:	steel/stainless steel
assembly:	assembly to concrete with a chemical or rocker anchors
height:	690 mm - 550 mm
cooperating elements:	UPLS, UPLR, UPLG, SL, PW, BW_S, OBR, SL, AS




PATENTED

SQK8

QUADROPOD WITH $\varnothing 8$ KNEES

PN-EN 795:2012 A
PN-EN 795:2012 C

material:	steel/stainless steel
assembly:	assembly to concrete with a chemical or rocker anchors
height:	690 mm - 550 mm
cooperating elements:	UPLS, UPLR, UPLG, SL, PW, BWS, OBR, SL, AS

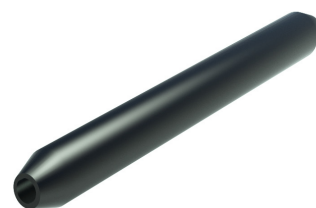



PATENTED

OSQ**QUADROPOD COVER**

assembly: applying on the quadropod legs

cooperating elements: SQK

**POST BASIS****BS****POST BASE**

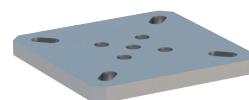
PN-EN 795:2012 A

material: stainless steel

assembly: concrete installation, with M12 screws or M12 chemical anchors

wymiary: 160 mm x 160 mm x 12 mm

cooperating elements: SP15, SP20

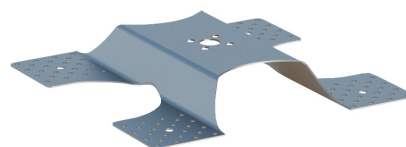
**BST****TRAPEZOIDAL BASE**

PN-EN 795:2012 A
PN-EN 795:2012 C

material: stainless steel

assembly: substrates: concrete, inverted roof, trapezoidal metal sheet, corrugated board, with 66 mm x 4 mm rivets

cooperating elements: SB, SP15, SP20, PW, BTB

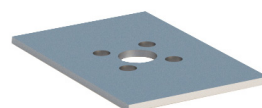
**BTB****T BASE STIFFENING PLATE**

PN-EN 795:2012 A
PN-EN 795:2012 C

material: stainless steel

assembly: assembly to a base T using M12 screws

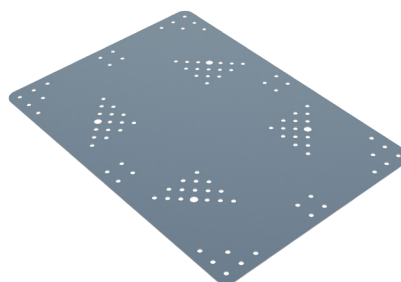
cooperating elements: BST



PW600**REINFORCING BASE 600**

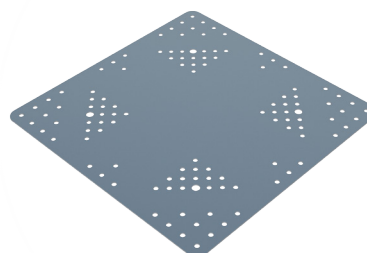
PN-EN 795:2012 A
PN-EN 795:2012 C

material:	stainless steel
assembly:	assembly to PUR, PIR, sandwich panels T40-Trapezoidal, metal sheet
dimensions:	600 mm x 430 mm x 2 mm
cooperating elements:	SQ, BST

**PW470****REINFORCING BASE 470**

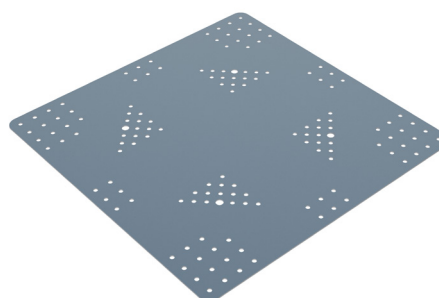
PN-EN 795:2012 A
PN-EN 795:2012 C

material:	stainless steel
assembly:	installation to an inverted roof on a trapezoid, metal sheet, sandwich panels with a core of mineral wool
dimensions:	470 mm x 470 mm x 2 mm
cooperating elements:	SQ, BST

**PW570****REINFORCING BASE 570**

PN-EN 795:2012 A
PN-EN 795:2012 C

material:	stainless steel
assembly:	installation to an inverted roof on a trapezoid, metal sheet
dimensions:	570 mm x 570 mm x 2 mm
cooperating elements:	SQ, BST

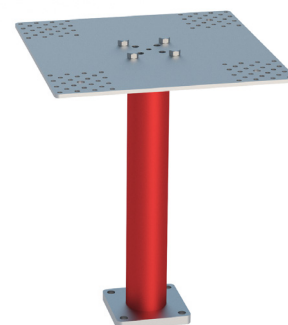


BW_S

FREE STANDING BASE

PN-EN 795:2012 A
PN-EN 795:2012 C

material:	stainless steel
assembly:	assembly to concrete base
height:	700 mm
cooperating elements:	SQ, BST

**DAMPERS****AS**

SPIRAL SHOCK ABSORBER INTERMEDIATE

material:	steel, aluminium
assembly:	assembly to turnables, anchors and ending elements with M12 screws
cooperating elements:	OBR, NA, NK, EKP, EKW

**ASK**

END SPIRAL SHOCK ABSORBER

material:	steel, aluminium
assembly:	assembly to turnables, anchors and ending elements with M12 screws
cooperating elements:	OBR, NA, NK, EKP, EKW



PERSONAL PROTECTION EQUIPMENT

HORIZONTAL SYSTEM

VERTICAL SYSTEM

CONNECTING ELEMENTS

UNIVERSAL ELEMENT

VERTICAL SYSTEM



GUIDE AND ANCHORING HANDLES

UPLG

ROPE GUIDING HANDLE WITH A PLUG

PN-EN 795:2012 A

- material: stainless steel
- assembly: element adapted to make 2 or 3 clamps on each side of the tube
- cooperating elements: LSN, SL, SP15, SP20, SB, SQ, GPK



UPLO

ROPE GUIDING, HANDLE OGD AND OGG INSTALLATION

PN-EN 795:2012 A

- material: stainless steel
- assembly: element adapted to make 2 or 3 clamps on each side of the tube, mounting to the post using M12 screw, PBT assembly with M6 screws
- cooperating elements: LSN, OGD, OGG, SP15, SP20, GPKPK, AN_UPL



UPL 8-10

ROPE GUIDING HANDLE FOR 2 TYPES OF ROPES

PN-EN 795:2012 A

- material: stainless steel
- assembly: element adapted to make 2 or 3 clamps on each side of the tube, mounting to the post using M12 screw, PBT assembly with M6 screws
- cooperating elements: LSN, SL, OGD, OGG, SP15, SP20, SB, GPKPK



NB

LOWER ANCHOR POINT WITH STARTING ELEMENT

PN-EN 795:2012 A

- material: stainless steel, aluminium
- assembly: M12 screw
- cooperating elements: LSN, DPKB



NSP**VERTICAL SPRING TENSIONER**

PN-EN 795:2012 A

material: stainless steel

assembly: M12 screw

cooperating elements: NB, DPKB, OGD

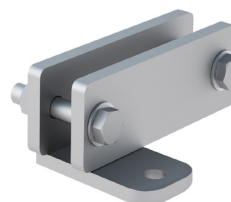
**LOWER ANCHOR POINTS****DPKB****LOWER ANCHORING POINT MADE OF METAL PLATES**

PN-EN 795:2012 A

material: steel

assembly: assembly to the 40x60 ladder stringer with the M12 screws

cooperating elements: UPLR, LSN, NB



The spacing of the plates is adjusted to the dimensions of the ladder's stringer.

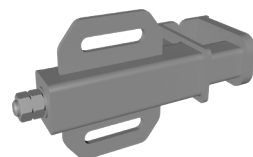
DPKP**LOWER ANCHOR POINT MADE OF PROFILES**

PN-EN 795:2012 A

material: steel

assembly: assembly to the ladder stringer with the M12 screw

cooperating elements: EKW, EKP, NA, NK, EKGR

**M5****WEIGHT**

PN-EN 353-2

material: steel

weight: 5 kg

cooperating elements: LSN



UPPER ANCHOR POINTS

GPK 102 UPPER ANCHOR POINT

PN-EN 795:2012 A

material:	steel
assembly:	assembly to rungs with an M12 screws and mounting element for upper anchorages
height:	1020 mm
cooperating elements:	UPLG



GPK 150 UPPER ANCHOR POINT 150 cm

PN-EN 795:2012 A

material:	steel
assembly:	assembly to the steel or aluminum ladder stringer longitudinal member with M12 screws and mounting element for upper anchorages
height:	1500 mm
cooperating elements:	UPLG



GPK 234/16/5 UPPER ANCHOR POINT 234/16/5, 234/20/5
GPK 234/20/5

PN-EN 795:2012 A

material: steel

assembly: assembly 234/16/5 to the steel or aluminum ladder stringer with M12 screws and mounting element for upper anchorages
 assembly 234/20/5 to the steel or aluminum ladder stringer with the M12 screws and mounting element for upper anchorages

height: 2340 mm

cooperating elements: UPLG



INSTALLATION ELEMENTS OF ANCHOR POINTS

GPK_PPS CEILING ADAPTER - GPK FIXING

PN-EN 795:2012 A

material: steel

assembly: for concrete and steel with the M12 screw or M12 chemical anchors

cooperating elements: UPLS



ELEMENTS CONNECTING THE VERTICAL AND THE HORIZONTAL SYSTEM

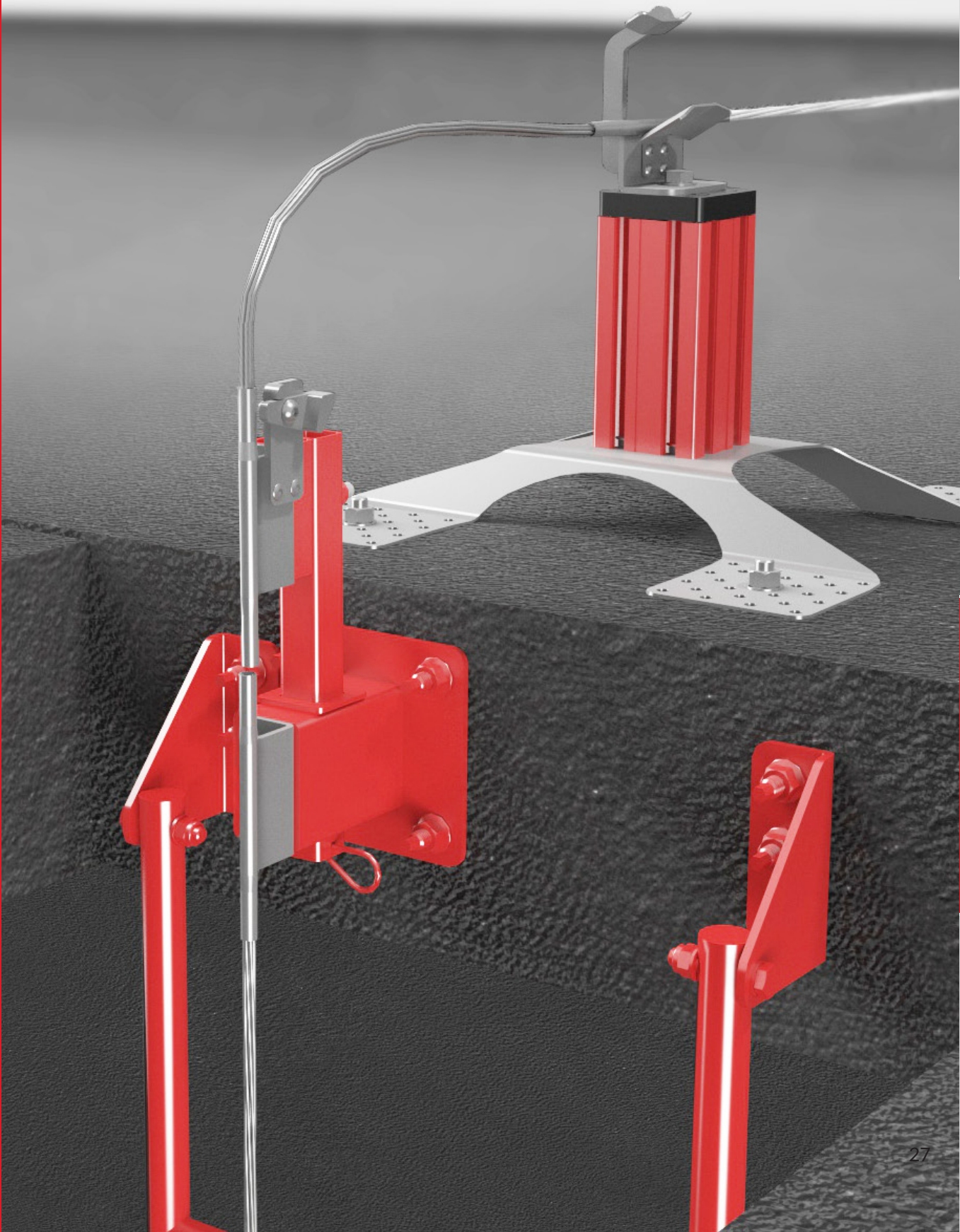
PERSONAL PROTECTION EQUIPMENT

HORIZONTAL SYSTEM

VERTICAL SYSTEM

CONNECTING ELEMENTS

UNIVERSAL ELEMENT



EDGE TRANSITION SYSTEMS

GPPK187/16/5 UPPER EDGE TRANSITION POINT
GPPK 187/20/5

PN-EN 795:2012 A
PN-EN 795:2012 C

material: steel

assembly: assembly 187/16/5 to the steel or aluminum ladder stringer with M12 screws,
assembly 187/20/5 to the aluminum ladder stringer with the M12 screws

height: 1870 mm x
1870 mm

cooperating elements: PBT, UPLO

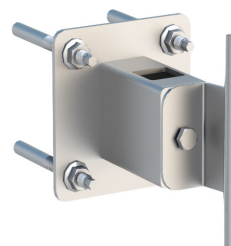


ROOF HATCH TRANSITION SYSTEMS

SGW ROOF HATCH SOCKET

PN-EN 795:2012 A

material:	steel
assembly:	for concrete and steel with the M12 screws or M12 chemical anchors
cooperating elements:	WGW, UPLS




PATENTED

WGW ROOF HATCH PLUG

PN-EN 795:2012 A
PN-EN 795:2012 C

material:	steel
assembly:	assembly to the rope guide using 2 or 3 clamps on each side
cooperating elements:	SGW, WGW, UPLO




PATENTED

The plug is located in the mounting element on the outside of the hatch, within easy reach user. After connecting to SGW, they form an edge crossing point ensuring continuity of belaying.

EM_WGW ROOF HATCH PLUG MOUNTING ELEMENT

PN-EN 795:2012 A

material:	steel
assembly:	for concrete and steel with the M12 screws or M12 chemical anchors
cooperating elements:	WGW




PATENTED

SWITCHES AND LIMITERS

PBT TRACKER LOCK SWITCH

PN-EN 795:2012 A

- material: stainless steel
- assembly: element mounted to Rope Guiding handle with M6 screws
- cooperating elements: GPKPK, SB, SQ, SP15, SP20



The element is used to switch the TRACK MASTER trolley lock during transition from horizontal to vertical system.

OGD LOWER LIMITER

PN-EN 795:2012 A

- material: stainless steel
- assembly: assembly to the rope Guiding handle using M5 screws
- cooperating elements: UPL, NB



The element is used to block the descent from vertical to horizontal.

OGG UPPER LIMITER

PN-EN 795:2012 A

- material: stainless steel
- assembly: assembly to the rope Guiding handle using M5 screws
- cooperating elements: UPLO, UPL_8-10



The element is used to block the exit from vertical to horizontal system.

UNIVERSAL ELEMENTS



ENDING ELEMENTS AND TENSIONERS

NK COMPLETE TENSIONER

PN-EN 795:2012 A

material: stainless steel

assembly: M12 screw

cooperating elements: DPKP, EPK



NA ASYMMETRIC TENSIONER

PN-EN 795:2012 A

material: stainless steel

assembly: M12 screw

cooperating elements: LSN, DPKP



EKP FIN TYPE ENDING ELEMENT

PN-EN 795:2012 A

material: stainless steel

assembly: M12 screw

cooperating elements: LSN, NK, AS



EKW FORK TYPE ENDING ELEMENT

PN-EN 795:2012 A

material: stainless steel

assembly: M12 screw

cooperating elements: LSN



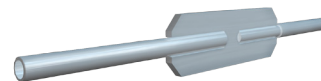
EKGR**ENDING ELEMENT TUBE THREAD TYPE**

PN-EN 795:2012 A

material: stainless steel

assembly: M12 screw

cooperating elements: LSN, NS

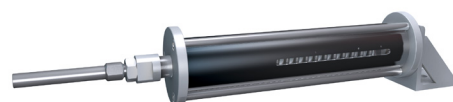
**NSK****SPRING TENSIONER**

PN-EN 795:2012 A

material: stainless steel

assembly: M12 screw

cooperating elements: SQ16, SQ10, SQ8, SB, SB10, SP15, SP20

**NSP****INTERMEDIATE SPRING TENSIONER**

PN-EN 795:2012 A

material: stainless steel

assembly: M12 screw

cooperating elements: SQ16, SQ10, SQ8, SB, SB10, SP15, SP20



STEEL ROPES

LSN

STEEL ROPE

PN-EN 795:2012 A

material:	stainless steel
type:	AISI 316, weave x19
diameter:	8 mm, 10 mm
assembly:	to the rope guiding handles and to the ending elements
cooperating elements:	UPL, NA, NK, EKP, EKGR



UNIVERSAL ANCHOR POINTS

UPK-1

UNIVERSAL ANCHOR POINT

PN-EN 795:2012 A

material:	stainless steel
assembly:	trough out brick wall
cooperating elements:	LSN

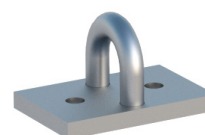


UPK-2

UNIVERSAL ANCHOR POINT - TRANSVERSE

PN-EN 795:2012 A

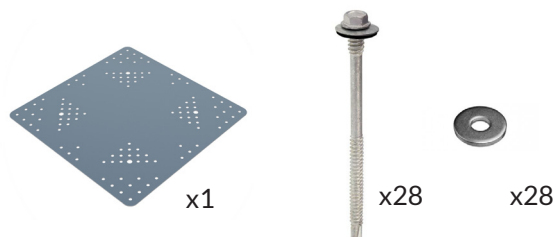
material:	stainless steel
assembly:	trough out brick wall
cooperating elements:	LSN



MOUNTING KITS

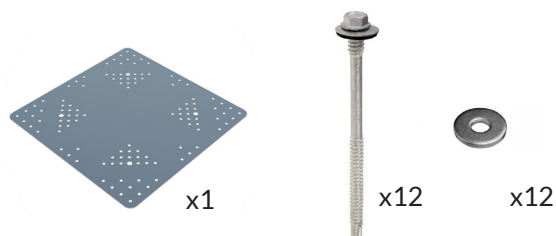
ZM-SWM SET FOR SANDWITCH PANEL WITH MINERAL WOOL CORE

set components: 1 x reinforcing plate PW470
28 x screw TR6,3 / 7,0x140
28 x M8 EPDM washer



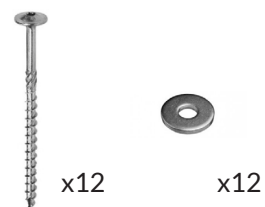
AM_PR SET FOR SANDWITCH PANEL PUR AND PIR

set components: 1 x PW600 reinforcement plate
12 x 5.5 / 6.3X200 M8 screw
12 x M8 HV200 washer



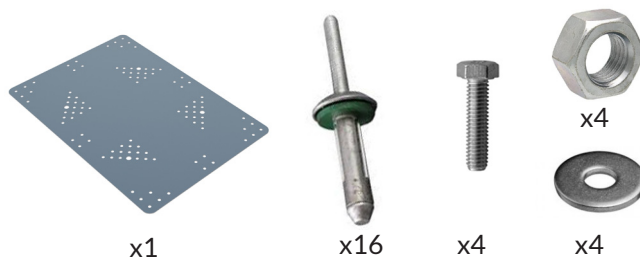
ZM_T18 SET FOR TRAPEZOIDAL METAL SHEETS

set components: 12 x TR 6 3/7 0x140 screw
12 x EPDM washer TR6,3 / 7,0x140



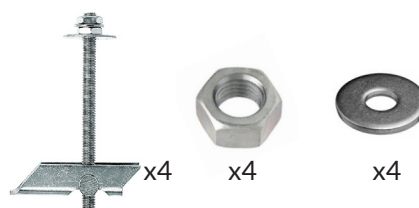
ZM_TP SET FOR TRAPEZOIDAL METAL SHEETS 40 MM

set components: 1 x PW600 reinforcement plate
16 x rivet 66x4 BULB-TITE
RV6604
4 x M12x30 screw class 8.8
4 x M12 nut class 8.8



ZM_KP SET FOR PAN PLATES

set components: 4 x M8x300 rocker anchor
4 x M8 nut class 8.8
4 x M8 HV200 washer



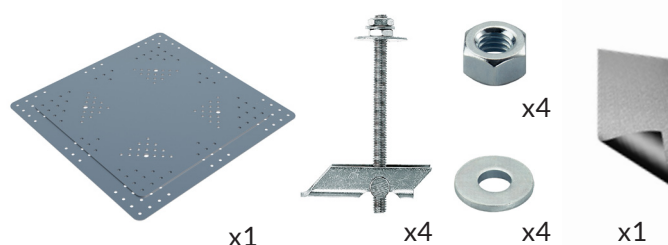
ZM_Z SET FOR REINFORCED CONCRETE SLABS

set components: 4 x fischer RG M12 x 160 chemical anchor A416 x rivet 66x4 BULB-TITE RV6604
4 x M12 self-locking nut class 8.8
4 x M12 HV300 washer
1 x chemical glue FIS VL 300T (from FISHER)



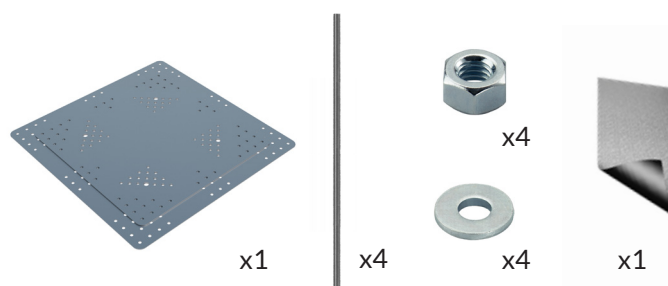
ZM_OT SET FOR AN INVERTED ROOF ON TRAPEZOIDAL METAL SHEET

set components: 1 x PW470 reinforcement plate
1 x PW570 reinforcement plate
4 x M12x500 cradle anchor
4 x M12 nut 8.8 class
4 x M12 HV200 washer
1 x PROTAN COOL membrane ROOF 600x600



ZM_OB SET FOR AN INVERTED ROOF ON CONCRETE BASE

set components: 1 x PW470 reinforcement plate
1 x PW570 reinforcement plate
4x threaded rod class 8.8 M12x1000
4 x M12 nut 8.8 class
4 x M12 HV200 washer
1 x 600x600 membrane





www.rockmaster.eu



Track Master



CBR Rock Master Sp. z o. o. Sp. k.
ul. Królewska 94/11, 30-079 Kraków,
tel. +48 12 290 30 35;
e-mail: office@rockmaster.eu
NIP: 945-18-44-489
www.rockmaster.eu

Research and Development Center
ul. Sportowa 20, 32-083 Balice,
e-mail: cbr@rockmaster.eu