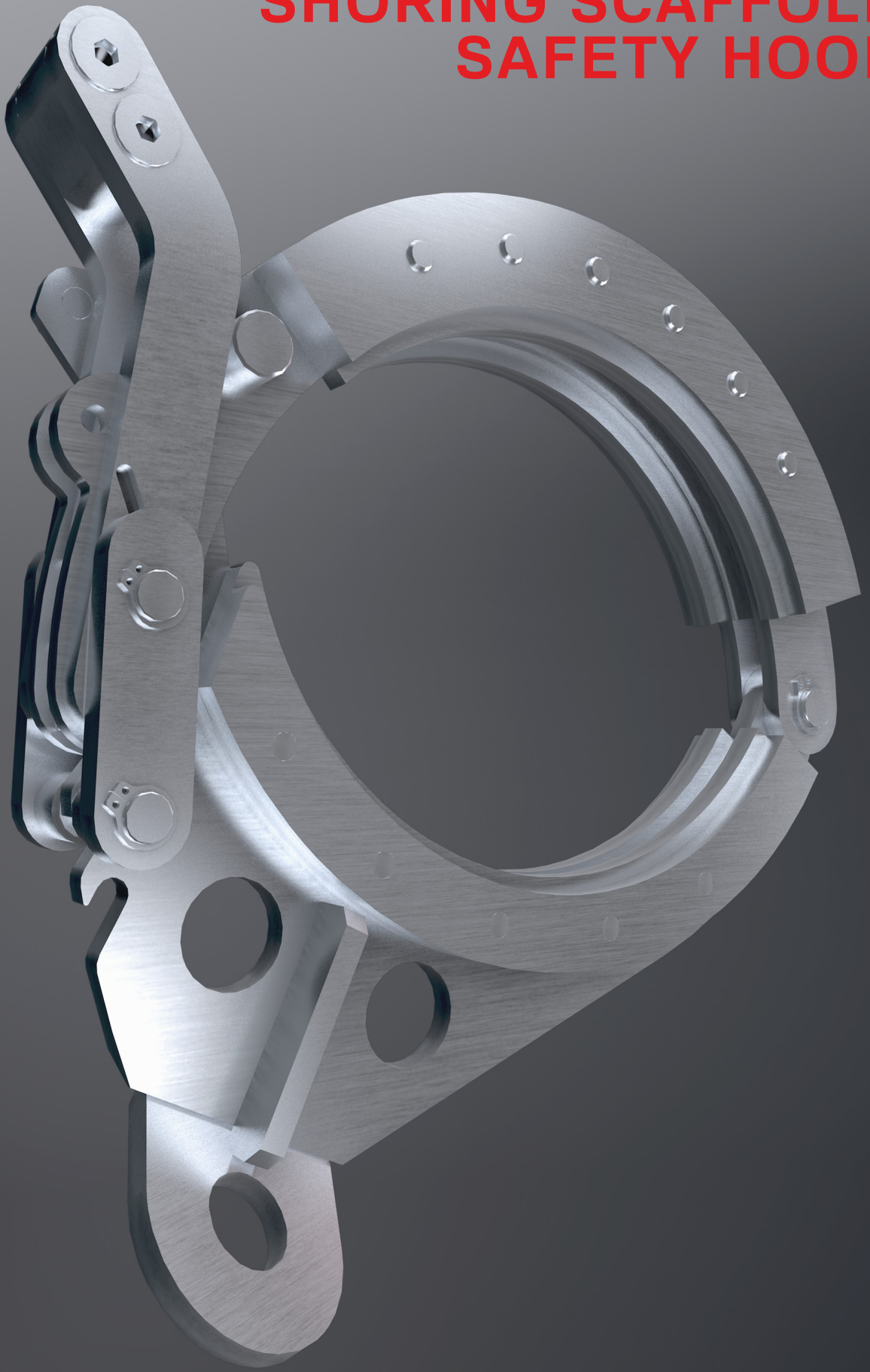


SHORING SCAFFOLD SAFETY HOOK



SHORING SCAFFOLD SAFETY HOOK

MOBILE ANCHOR POINT FOR SHORING TOWERS

CHARACTERISTICS

Shoring Scaffold Safety Hook / HAWP/ is a personal fall protection device conforming to EN795B standard.

HAWP is a mobile anchor point providing fall protection for workers during their operations on shoring towers. It is available in two versions: small for diameters (and profiles) ranging from 48 to 80 mm, and large for 100 to 120 mm.

Attachment point is located in a spot which allows for easy connection with safety lanyard.

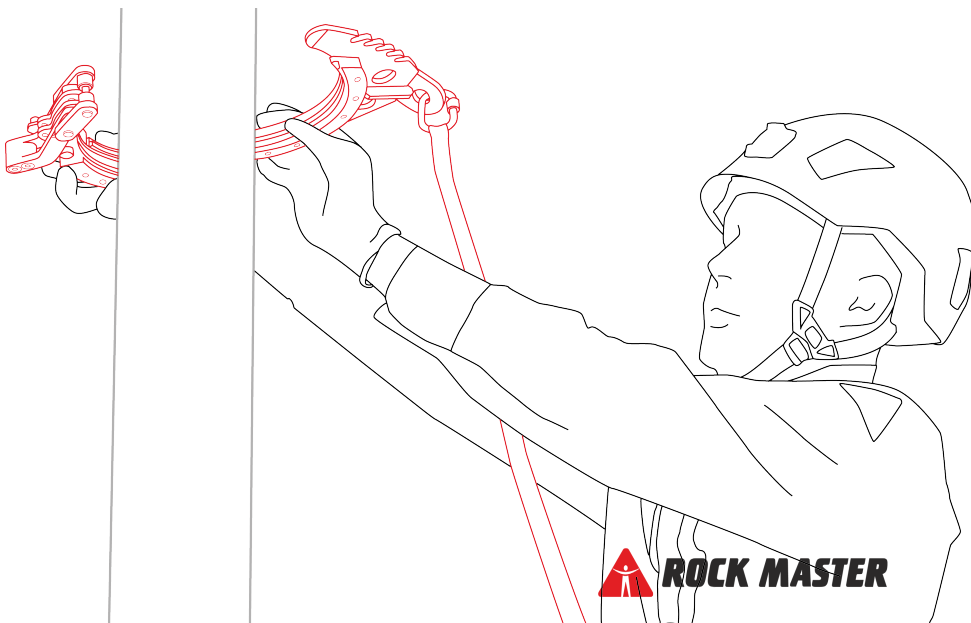
Eccentric lever provides tight fit of the hook onto a shoring prop. Ratchet mechanism requires two, sequential operations to open and dismount a hook, therefore it protects from unintentional dismantling.

Elastomer inserts enhance fitment and protect from slippage.



Because of its self-tightening abilities it can be used when moving vertically and diagonally. It can be also used in a same way as a conventional connector (for climbing ladders etc.)

HAWP is patented by European Patent Office and will be certified by PRS.



HAWP can be used on vertical, horizontal and diagonal construction elements.

TECHNICAL INFO

STANDARD: EN795B

MATERIAL: stainless steel, aluminium,
silicone rubber

WEIGHT: S: 1,1 kg
L: 1,7 kg

PACKAGE DIMENSIONS: S: 20x15x5 cm
L: 25x20x5 cm

1 Ratchet mechanism

2 Eccentric lever

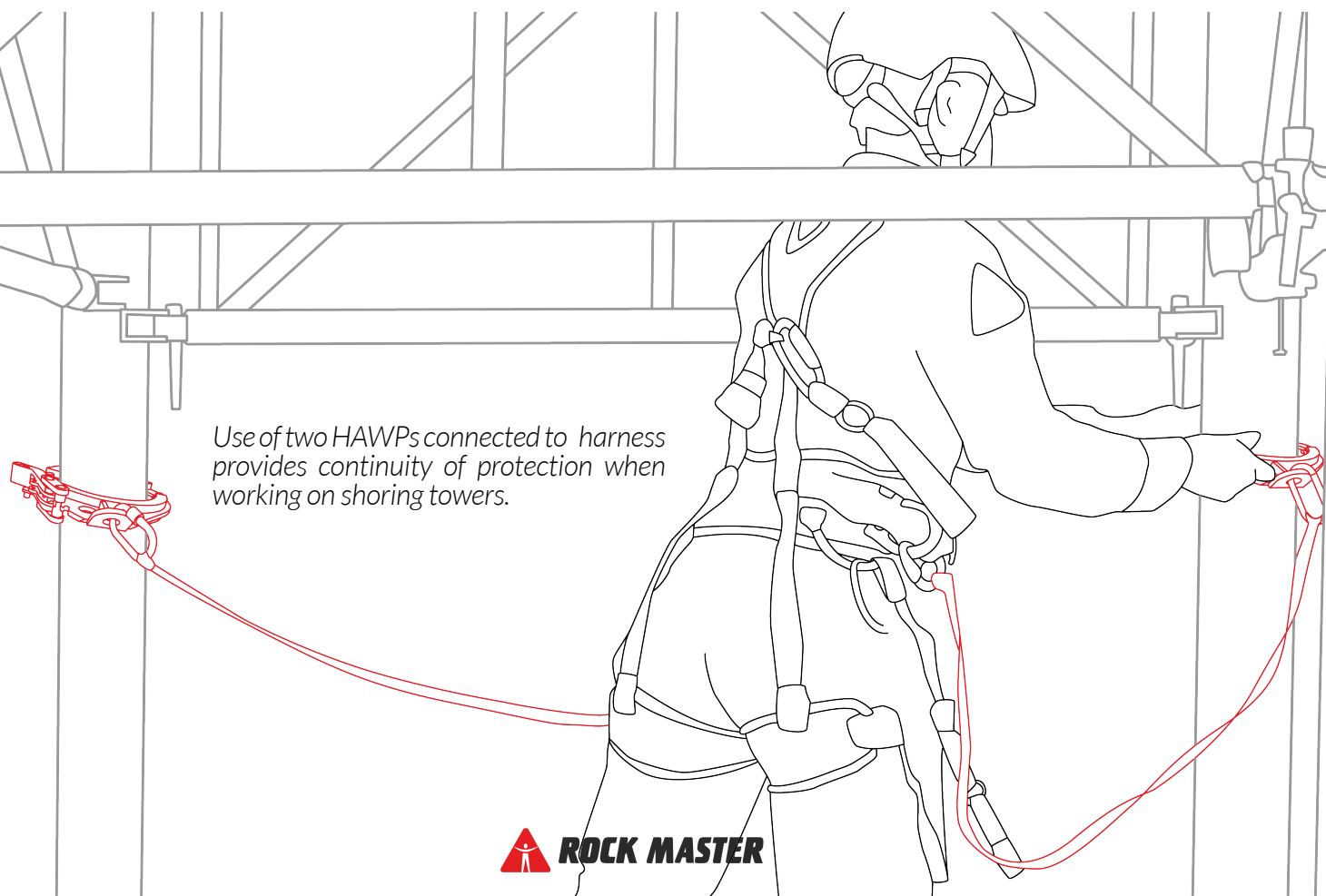
3 Pivot

4 Attachment point

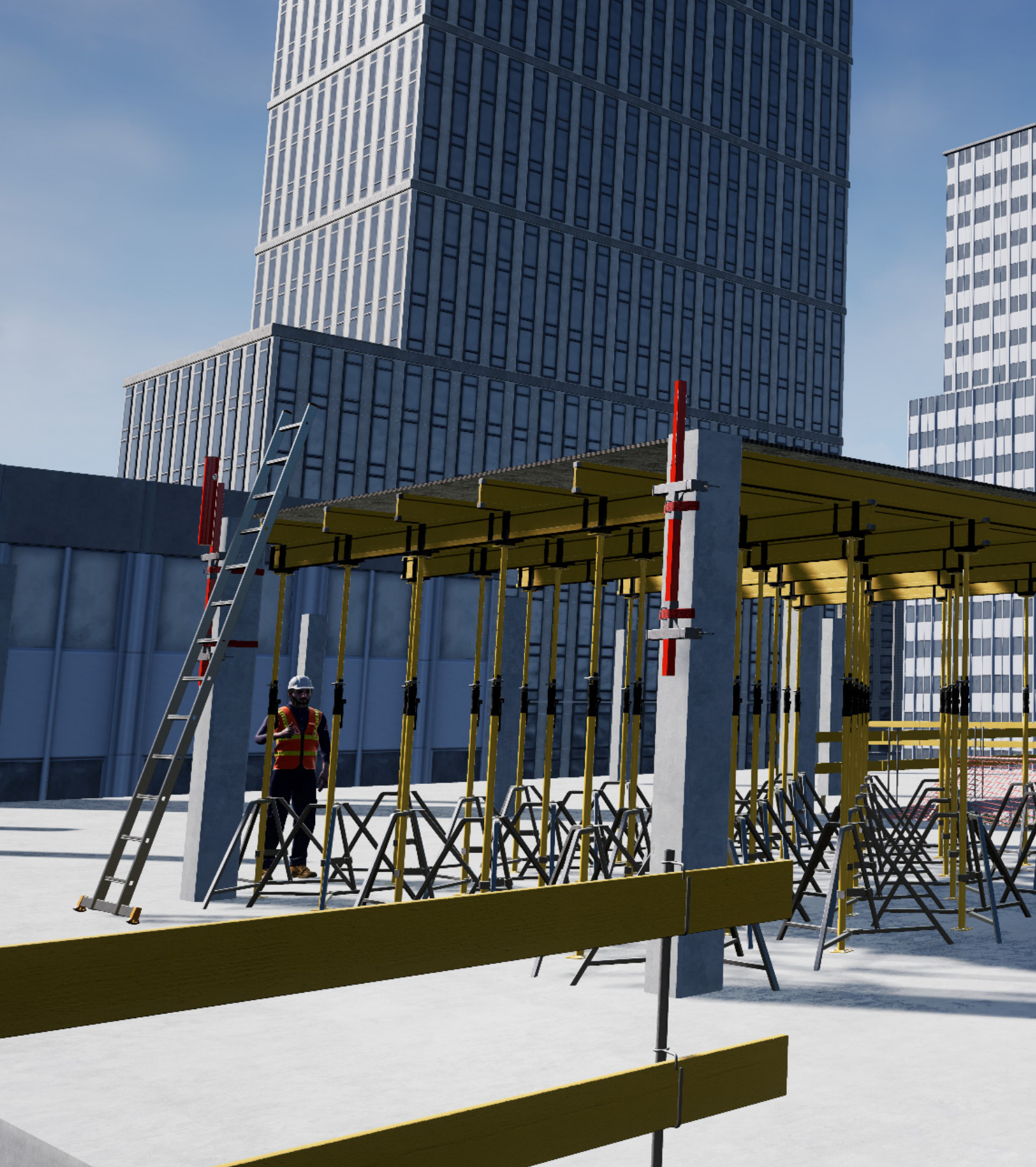
5 Tooth part of a locking mechanism



Ratchet mechanism allow for better fitment onto different profiles of shoring props. Silicone rubber inserts provides better grip and protect shoring from damage.



Use of two HAWPs connected to harness provides continuity of protection when working on shoring towers.



ROCK MASTER

CBR Rock Master Sp. z o. o. Sp. k.
ul. Królewska 94/11, 30-079 Kraków,
tel. +48 12 290 30 35;
e-mail: office@rockmaster.eu
NIP: 945-18-44-489

Centrum Badań i Rozwoju
ul. Sportowa 20, 32-083 Balice,
e-mail: cbr@rockmaster.eu

www.rockmaster.eu