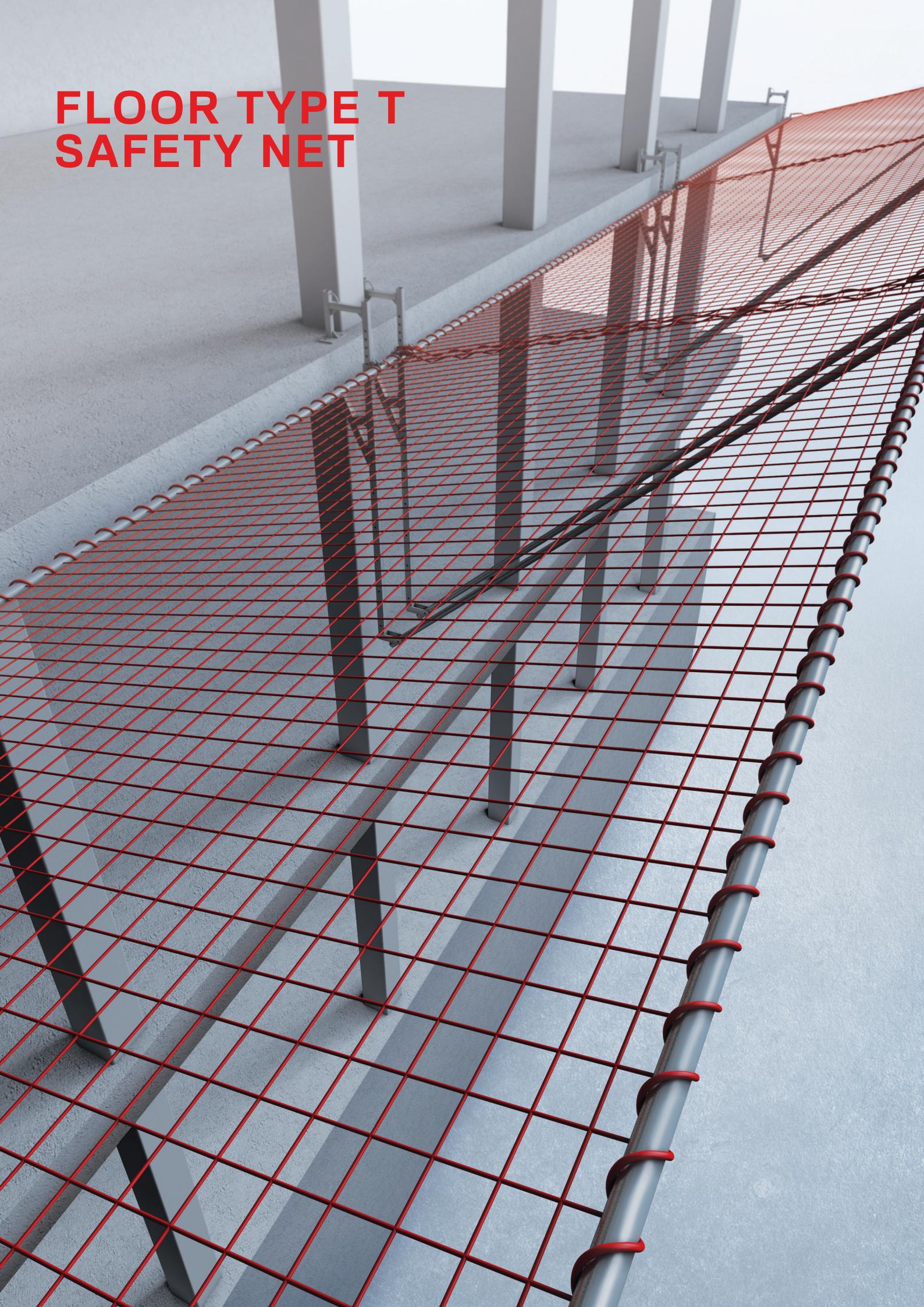
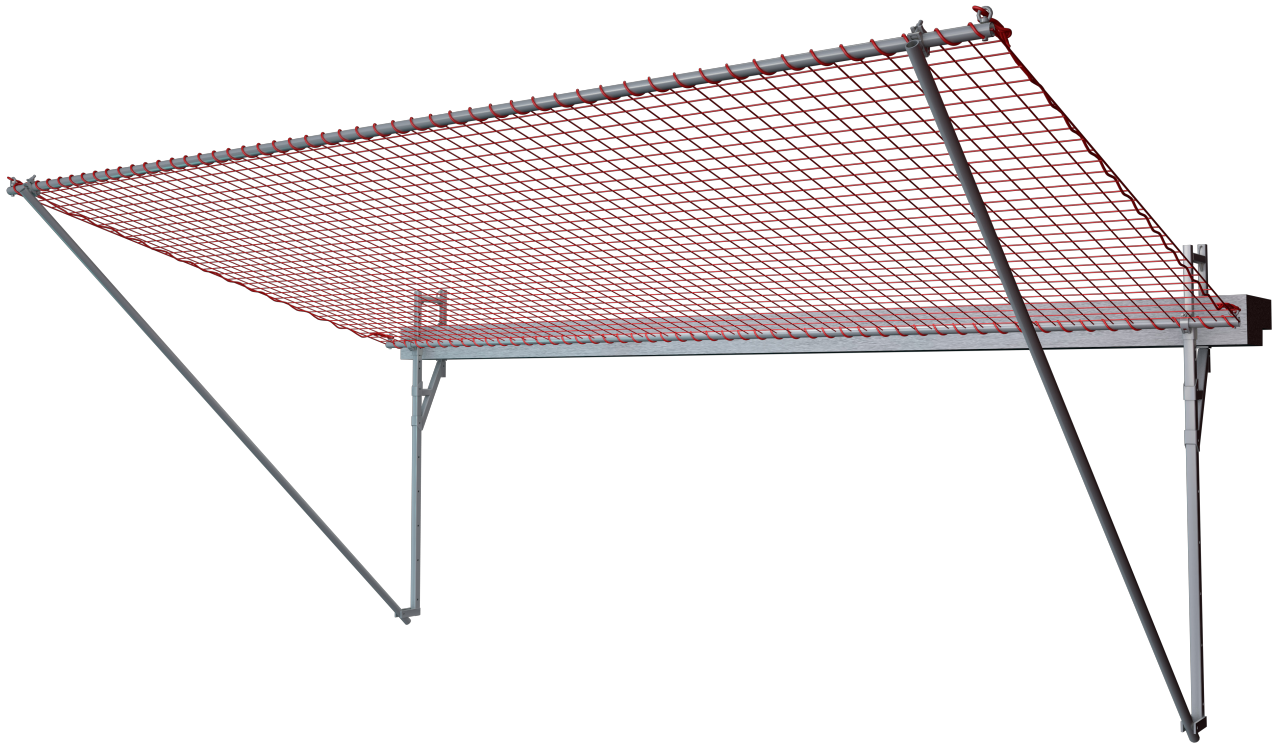


**FLOOR TYPE T
SAFETY NET**



FLOOR TYPE T SAFETY NET

FLOOR TYPE SYSTEM T SAFETY NET / STWS/ SAFETY NET FOR WORKERS AND FALLING OBJECTS



CHARACTERISTICS

System T segments are meant to be mounted to the concrete floor by 4 anchors. Segments has a span of 6 m and catching width of 3 m. Segments can be combined by overlapping or lacing.

System T safety net protects workers in case of fall from height not exciding 6 m. It utilizes net with 10 cm mesh size layered with fine mesh to protect from falling dust, rocks and other particles.

It can be also combined with 6 cm mesh to protect against fall of smaller objects (tools etc.)

Safety net will effectively protect fall of larger objects (such as beams) only when installed on a top floor.

Mounting for the first time requires crane use, then to dismount (or add connecting segments) you will only need portable winch (Rock Master RWRM).

Net was tested by dropping 100 kg test mass from height of 7 m. It is conforming and certified to EN1263-1 and EN1263-2 standards (certified by AGH University of Science and Technology).

TECHNICAL INFO

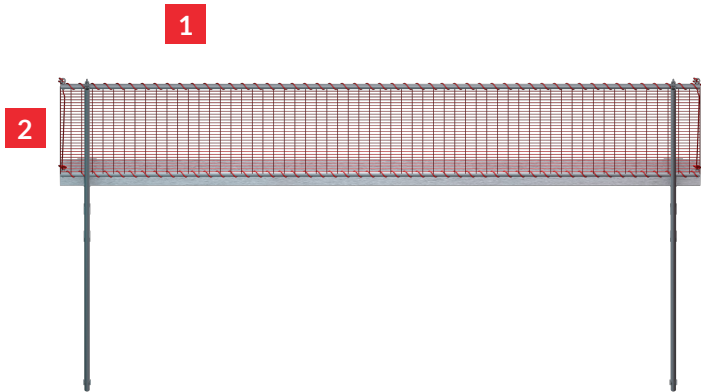
STANDARD: EN 1263-1
EN 1263-2

MATERIAL: galvanized steel,
nylon, polypropylene

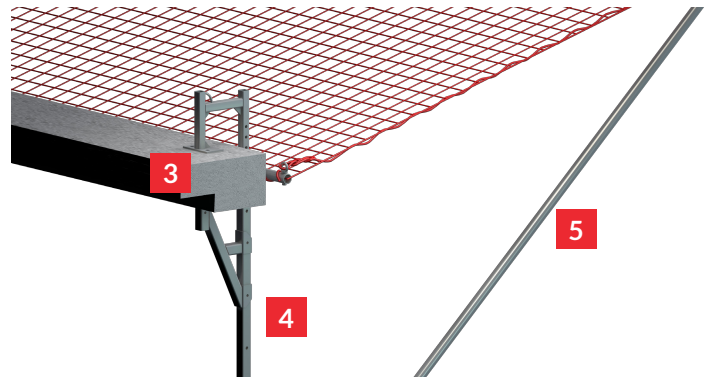
OTHER: compatible with
STWP i STWR

WEIGHT: ~140 kg

**PACKAGE
DIMENSIONS:** 6m



Frontal view



Side view

1 Longitudinal tube

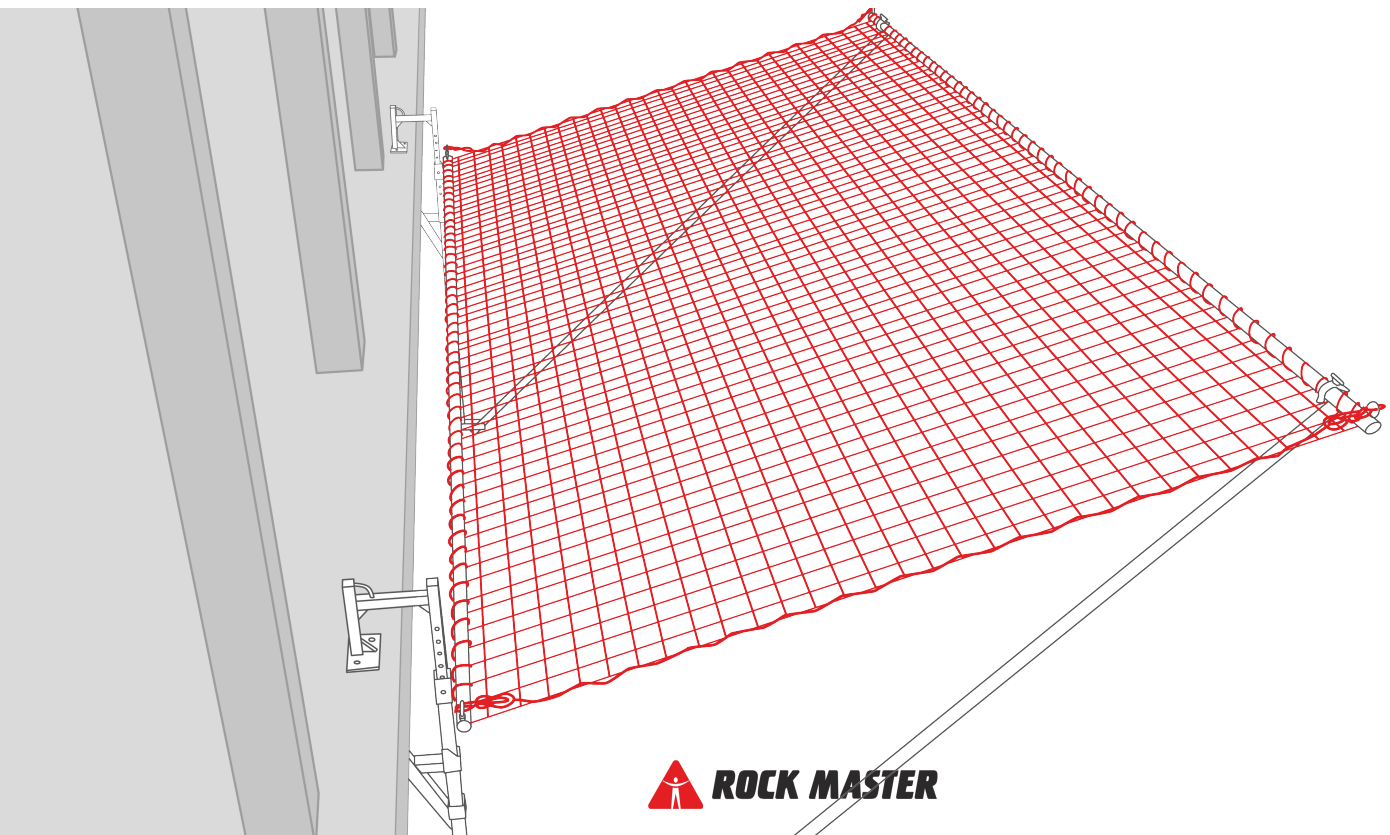
3 Clamp

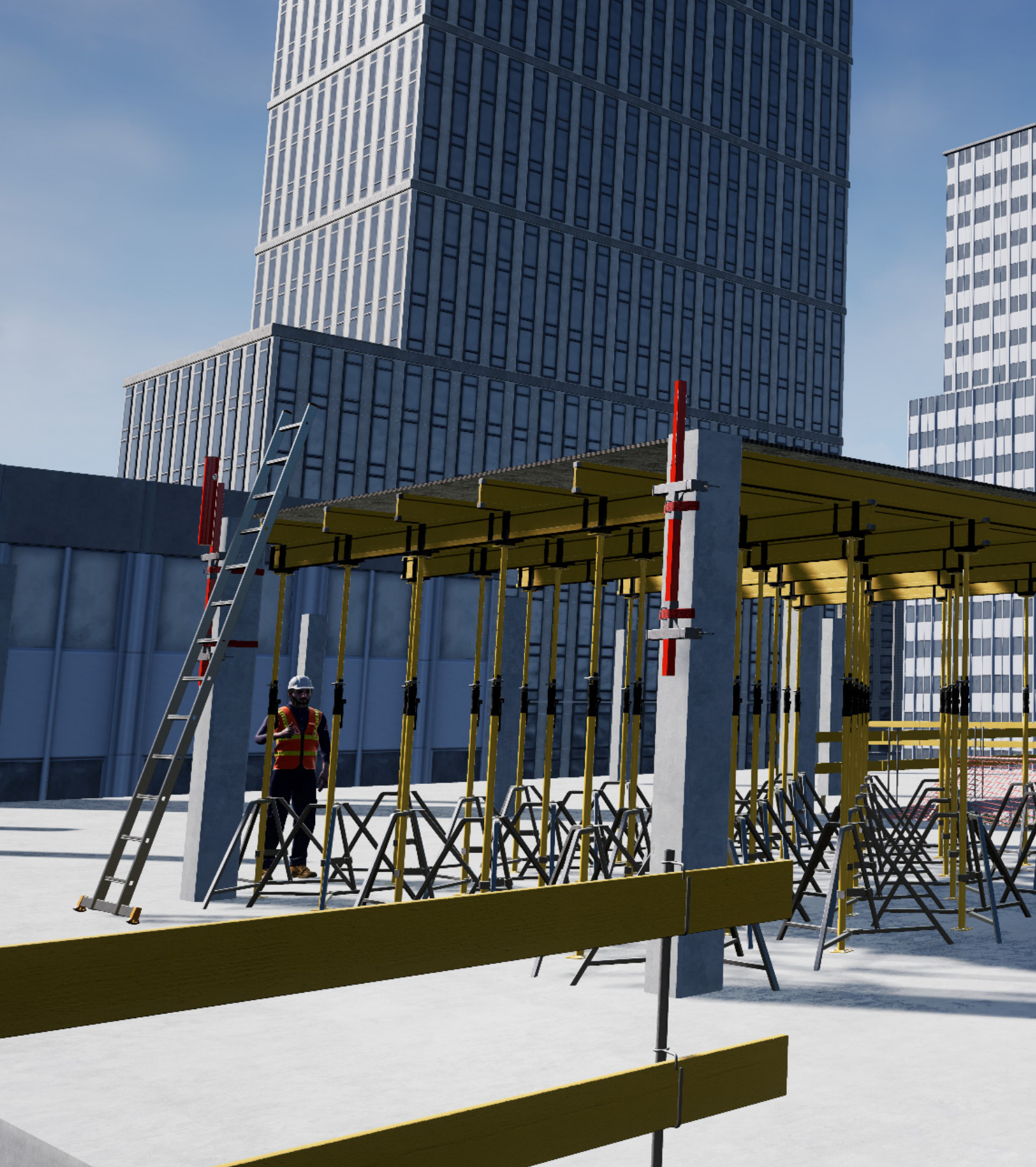
5 Diagonal bracing tube

2 Net 3,2m x 6m

4 Vertical strut

System T Safety Net mounted to the floor





ROCK MASTER

CBR Rock Master Sp. z o. o. Sp. k.
ul. Królewska 94/11, 30-079 Kraków,
tel. +48 12 290 30 35;
e-mail: office@rockmaster.eu
NIP: 945-18-44-489

Centrum Badań i Rozwoju
ul. Sportowa 20, 32-083 Balice,
e-mail: cbr@rockmaster.eu

www.rockmaster.eu